

# ComAnt<sup>®</sup> Communications Antennas

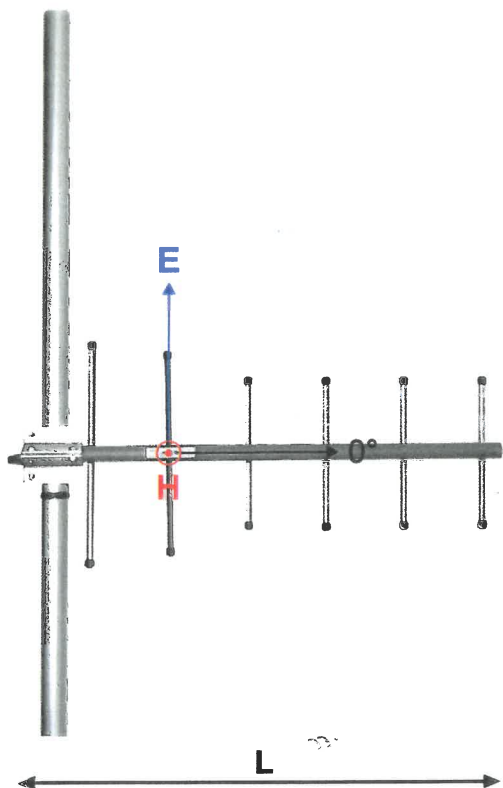
## FREQUENCY INDEPENDENT DATA

Description: directional yagi  
 Frequency: 326-353 MHz, 336-364 MHz, 365-395 MHz, 380-410 MHz, 405-440 MHz, 440-475 MHz, 830-890 MHz, 880-960 MHz

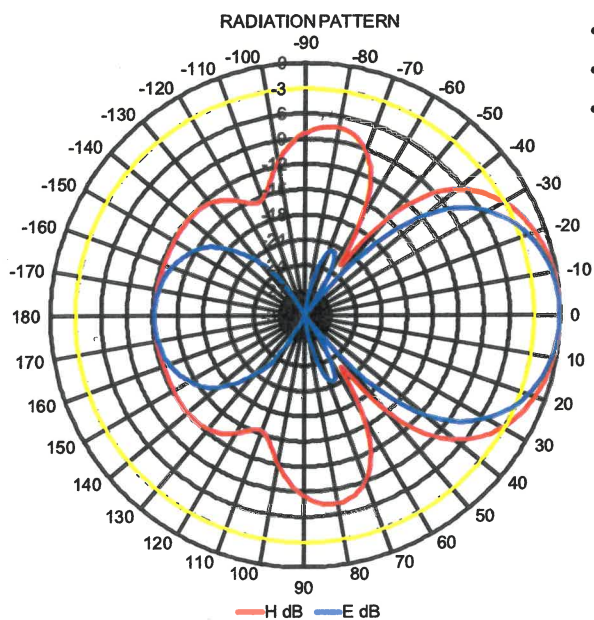
Impedance: 50 ohm  
 Gain: 10 dBi  
 H -3 dB: 59°  
 E -3 dB: 47°  
 F/B: 12 dB  
 Polarization: vertical/horizontal  
 Connector: N-female/TNC-female  
 VSWR: < 1.5  
 Radome: UV resistant ABS/FG, RAL 7012, PU foam filling copper

Radiator: coated aluminium  
 Passive elements: Ø 35-60 mm, aluminium alloy  
 Attachment: bracket, stainless steel V-bolts and self-locking nuts

Lightning protection: DC-short circuited  
 Temperature: -40°C - +80°C  
 IP: 67



- combination of durability, light weight and low wind load
- radome enclosed radiator
- IP67 proof construction
- all electromechanics moulded inside of closed cell PU foam
- DC shorted feed point
- integrated impedance compensation
- integrated RF choke



RoHS  
Compliant

CompleTech  
ComAnt<sup>®</sup> -antennas by CompleTech, Finland

CAY++ DIRECTIONAL YAGI

208-552