

0 dB Mobile GlassFix® Antenna for the 450 MHz Band

DESCRIPTION

- Shortened half-wave, mobile antenna for the 450 MHz band using the GlassFix® mounting principle.
- Attractive appearance with encapsulated shortening coil.
- Mounting on car window glass – no holes required.
- Double-adhesion procedure ensures fast and reliable fixing.
- Internal matching unit feeds external antenna through window glass.
- Half-wave design – no ground plane required.
- High positioning gives performance equal to conventionally mounted car roof antenna.
- FME FastCabling system (cable to be ordered separately).
- Simple tuning procedure by means of tuning screw on matching unit.
- Easy removable whip for car wash.
- Swivel joint for 180° angle adjustment.
- If removal of antenna installation is necessary, a quick dismantling procedure leaves no trace of the installation.

NOTE

GF antennas are not suitable for car models with windows that have heat reflective coating.

ORDERING

| Type | Product No. | Frequency |
|-----------------------------------|-------------|-----------------|
| GF 405/s | 130000788 | 380 ... 410 MHz |
| GF 405/l | 130000789 | 406 ... 440 MHz |
| GF 405/h | 130000790 | 430 ... 470 MHz |
| Accessories FME-Cables | | |
| 1 m FME(f) | 130000437 | |
| 2 m FME(f) | 130000447 | |
| 3 m FME(f) | 130000457 | |
| 4 m FME(f) | 130000466 | |
| 5 m FME(f) | 130000474 | |
| 6 m FME(f) | 130000483 | |
| 4 m FME-white(f) | 110000064 | |
| 6 m FME-white(f) | 110000066 | |
| 12 m FME-white(f) | 110000068 | |
| 18 m FME-white(f) | 110000069 | |
| Accessories FME-Connectors | | |
| FME(f)-FME(f) | 130000583 | |
| FME(m)-P(m) (Prolongation) | 130000565 | |
| FME(m)-N(m) | 130000571 | |
| FME(m)-FSMA (Female-SMA) | 130000578 | |
| FME(m)-BNC(m) | 130000566 | |
| FME(m)-TNC(m) | 130000569 | |
| FME(m)-UHF(m) | 130000572 | |
| FME(m)-MUHF(m) (Mini-UHF) | 130000573 | |
| FME(m)-EMUHF(m) (Elbow-MUHF) | 130000582 | |
| FME(m)-EBNC(m) (Elbow-BNC) | 130000580 | |
| FME(m)-ETNC(m) (Elbow-TNC) | 130000581 | |
| FME(m)-SMA(m) | 130000577 | |

FME-SYSTEM ACCESSORIES - NOTE

For further information about other types of FME-cables and FME-connectors, please compare the cable and connector data sheets under accessories in our catalogue.



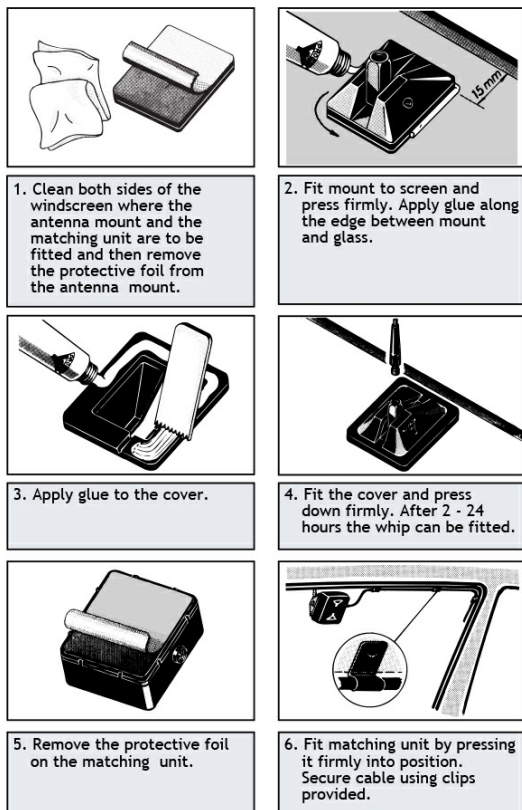
SPECIFICATIONS

| Electrical | |
|---------------------|---|
| Model | GF 405/... |
| Frequency | 450 MHz-band covered by three tunable models |
| Antenna Type | Shortened ½ λ mobile GlassFix® Antenna |
| Polarisation | Vertical |
| Impedance | 50 Ω |
| VSWR | ≤ 1.5:1 @ f.res. |
| Max. Input Power | 25 W |
| Bandwidth | ≥ 8 MHz @ SWR ≤ 2.0 ≥ 15 MHz @ SWR ≤ 3.0 |
| Gain (EIA RS-329-1) | 0 dB |
| Mechanical | |
| Materials | Whip: Stainless steel and black-chromed brass Mount and indoor unit: Weather- and shockproof plastics, Corrosion-safe and corrosion-protected metals |
| Cable | FME-cable to be ordered separately |
| Colour | Black |
| Height | Approx. 240 mm / 9.45 in. |
| Weight | Approx. 0.03 kg / 0.07 lb |
| Mounting | On car windows with silicone glue (52 mm x 47 mm obstruction-free mounting area required) |
| Glass Thickness | 2.5 - 7 mm / 0.10 - 0.28 in. |

1. BEFORE INSTALLATION

- When selecting mounting location take into consideration: positions of back view mirror, wiper blade paths and defogger wires (when mounting on rear window). The driver's view should not be obstructed.
- Max. allowed curvature of the glass surface on the mounting spot is 2 mm deflection per 100 mm length.
- Environmental- and car temperature must be above 15° C at installation, and surfaces to be glued must be dry and clean.

2. INSTALLATION



Do not use sealer on rubber gasket or other places.

3. AFTER INSTALLATION

- Allow the silicone gluings to dry off 2 hours at a temperature above 15° C. To ensure full strength of the glue, it is recommended to keep the whip off the mount for 24 hours.

4. TUNING INSTRUCTIONS

- Insert a forward/reflection-type wattmeter between the transmitter and the antenna.
- Key the transmitter and observe the forward and the reflected power.
- Adjust the tuning screw on the matching unit until minimum returned power is obtained.

REINSTALLATION KIT

A reinstallation kit including all necessary parts for transfer of the antenna to another vehicle is available under order No. »GF-RK«.

WARNING

SAFETY PRECAUTIONS

Antennas mounted on the windscreen may cause relatively high field strengths in the passenger cabin and near the dashboard.

1. To prevent health hazard due to RF radiation, persons must not be closer than 30 cm to the antenna whip (transmitter output power to the matching unit: 20 W). (DIN 57 848).

2. The RF signals at the dashboard may cause interference in the car's electronic equipment such as broadcast radio, computer automatics, braking systems, electronic ignition, relays etc. Some cars are more susceptible to disturbances than others. It is the responsibility of the installer to carry out a thorough check of the proper functioning under any conditions of such circuits before finishing installation.

The enclosed silicone adhesive contains acetic acid and fungicides. Keep out of reach of children and dispose properly.

ASSEMBLY DETAILS

